

MONTHLY MEMBERSHIP PROGRESS REPORT

District 12 S

Results as of: 6/30/2024

GMT:

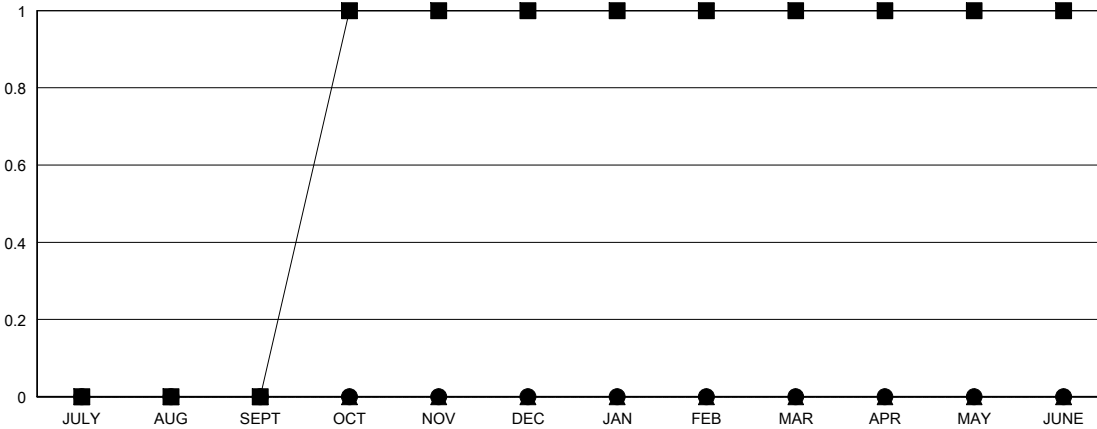
LOCATION TENNESSEE

GMT CA

Clubs			
RESULTS FOR 2023-2024			
QUARTER	NEW CLUB GOAL	NEW CLUBS	DROPPED CLUBS
JULY/AUG/SEPT	0	0	0
OCT/NOV/DEC	1	0	2
JAN/FEB/MAR	0	0	2
APR/MAY/JUNE	0	0	8

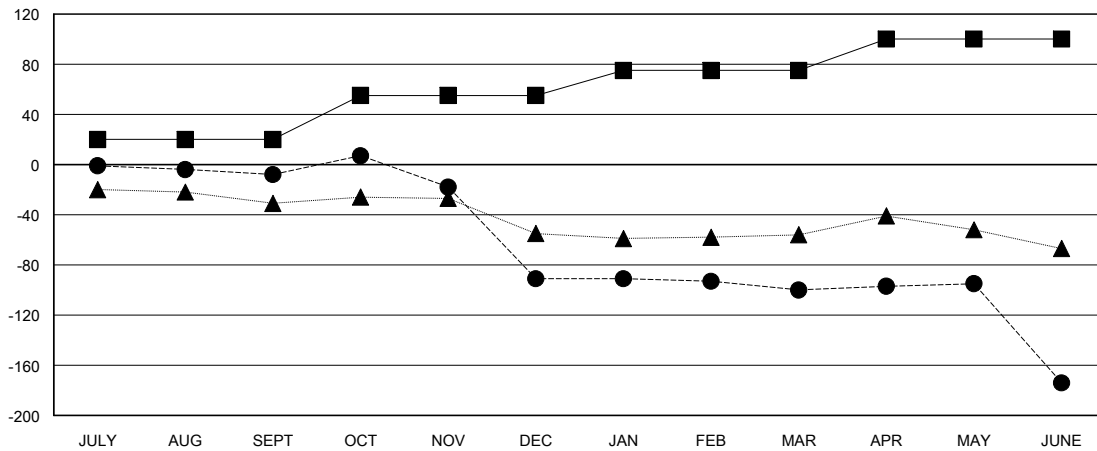
Members			
RESULTS FOR 2023-2024			
QUARTER	MEMBER GROWTH NET GOAL	MEMBER GROWTH ACTUAL	DROPPED MEMBERS ACTUAL (including transfers)
JULY/AUG/SEPT	20	9	16
OCT/NOV/DEC	35	22	104
JAN/FEB/MAR	20	10	18
APR/MAY/JUNE	25	19	88

GOALS AND ACTUAL NEW CLUBS CUMULATIVE



- - CURRENT YEAR GOALS FOR NEW CLUBS
- - CURRENT YEAR ACTUAL NEW CLUBS
- ▲ - LAST YEAR ACTUAL NEW CLUBS

GOALS AND ACTUAL MEMBERS CUMULATIVE



- - MEMBER GROWTH NET GOAL
- - MEMBER GROWTH ACTUAL
- ▲ - LAST YEAR MEMBERSHIP ACTUAL

DROPPED CLUBS: 12	21 CLUBS OF 47 ADDED 1 OR MORE NEW MEMBERS	GENDER DISTRIBUTION
		MALE 441 (54.31%)
		FEMALE 371 (45.69%)
DROPPED MEMBERS	CLICK HERE FOR CUMULATIVE MEMBERSHIP DATA	TOTAL FAMILY UNIT MEMBERS 197
DECEASED 15		FAMILY MEMBERS PAYING HALF DUES 103
CLUB CANCELLED 89		
OTHER 122		
TOTAL 226		